



TAD – 12AX7A/ECC83 REDBASE® High Performance High-Mu Twin Triode

New for 2024: the TAD™ 12AX7A/ECC83 REDBASE® (part number: RT-12AX7) is a completely new design. This miniature, high-mu twin triode with good gain is best for thick, clean tones as well as for those modern preamps where a deep low end is required.

Selected and recommended for musical amplifier amps to enhance responsiveness, dynamics and clarity. Perfect for cathode follower positions also due to its cathode-to-heater voltage-withstand capability.

Recommended for all positions in medium gain or for V2+ positions in high-gain amps.

For V1 in general but especially for high-gain amps or phono/audio-amps, we recommend our 7025/E83CC REDBASE Highgrade (part number: RT-7025).

The TAD 12AX7A/ECC83 REDBASE® can replace any 7025, 12AX7WA, 12AX7WB, 12AX7LPS, 12AX7EH, ECC83 or E83CC.

Characteristics of a bogey tube:

Electrical		
Heater:	series	parallel
Voltage (AC or DC)	12.6V +/-1.0	6.3+/-0.5
Current ca.	0.18	0.35
Heating	Indirect	
Cathode-to-heater potential, max.	180 V	
Direct interelectrode capacitances, max.***		
Grid to plate	1.9 pF	
Grid to cathode	2.2 pF	
Grid to heater	0.5 pF	
Plate to cathode	0.5 pF	
Mechanical		
Operating Position	Any	
Base	E9-1, Small Button 9 Pin	
Dimensions:		
Height	56 mm	
Seated height	49 mm	
Diameter	22.5 mm	
Cooling	conventional	
Approximate net weight	12 g	

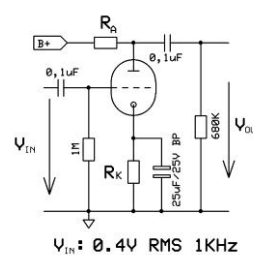
***Without external shielding, nominal values

AF Power Amplifier

Maximum ratings	
DC plate voltage	330 V
Positive DC Grid Voltage	0 V
Negative DC Grid Voltage	-55 V
Plate dissipation	1.2 W
Bulb temperature (surface hottest point)	165°C
Cathode Current	8 mA
Rg-k max.	2.2MΩ

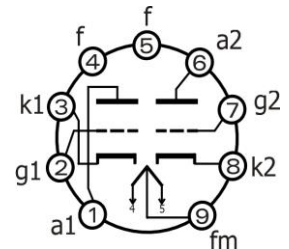
RT-12AX7, 12AX7/ECC83 REDBASE (2024)						
B+ / V	R _A / kΩ	R _K / kΩ	V _{Out} / V _{RMS}	V _{Out} / V _{Lin}	THD / %	I _A / mA
200	47	1,50	14,4	36,0	5,7	0,9
250	47	1,20	15,9	39,8	4,0	1,2
300	47	1,00	17,9	44,8	3,0	1,6
350	47	0,82	18,6	46,5	2,1	2,0
400	47	0,68	19,5	48,8	1,8	2,5
200	100	1,80	18,6	46,5	5,3	0,7
250	100	1,50	20,4	51,0	3,8	0,9
300	100	1,20	22,0	55,0	2,8	1,2
350	100	1,00	23,2	58,0	2,2	1,6
400	100	0,82	24,1	60,3	1,7	1,9
200	220	2,70	20,4	51,0	5,7	0,4
250	220	2,20	22,5	56,3	4,2	0,5
300	220	1,50	24,6	61,5	3,1	0,7
350	220	1,20	25,8	64,5	2,6	0,9
400	220	1,00	26,9	67,3	2,0	1,1

Test setup:



Bottom View

Noval Base Connections



Outline View

